

# WILLIAM MACGREGOR'S NEWSLETTER

Thank you so much for the **donations** that you sent in for our Harvest Festival this week. These will be taken to Tamworth Foodbank this week who I know will be very grateful. Mrs Douglas has posted on Class Dojo this week about beginning our Christmas donations to **Sunningdale Care Home** again this year. This was amazing last year and your donations of Christmas presents made so many residents so happy on Christmas Day. Please contact Mrs Douglas on Class Dojo if you would like to take part in this this year. We will also be completing our very successful sponsored '**Ruldolph Run**' again this year raising money for St.Giles. Children will be bringing their sponsor forms home very soon.

The children looked fantastic on Friday for **number day**! Ladybirds and key stage 1 looked incredible as Number Blocks (as did Mrs Nicholson if you were lucky to see her) and key stage 2 were amazing rockstars. Each class completed lots of number based activities all day and key stage 2 were battling each other at various points for the 'Times Tables Rock Wrangle.' Lots of fun (and learning) was had by all.

Ladybird children had a very special visit this week from the **Ambulance Service**. The children are learning all about 'people that help us' and had so many questions to ask. The children also got a chance to sit in the ambulance and press the siren button which they loved. This week, the police will be on hand to answer more of their questions

Please take the time to go on MCAS and see what your child's **attendance** is. A reminder that if attendance is below 90% the Government deems this as a child being persistently absent and significantly will affect children's learning. 5 days off as unauthorised leave (not having a suitable reason for being at school, holiday or suspected holiday) may result in a penalty notice of £80 per parent per child. Children should only be absent from school if they have an illness that stops them. We can give Calpol in school.

## A few reminders:

- **School Disco** on Monday. LB, Yrs1&2: 4-5pm Yrs3-6: 5.15-6.15pm

Children can pay on the door £2 or you can pay on MCAS until 3pm tomorrow. Please drop children off at main reception and collect children from the library entrance. It is a Halloween themed disco so children can dress up if they would like too.

- We **finish** on Friday (25<sup>th</sup> October) for half term at the normal time of 3.10pm. All children will return to school on Monday 4<sup>th</sup> November.
- Please remember to go on MCAS and book your child's/children's **parents evening** slot for Thurs. 7th November.

## STAR OF THE WEEK

Ladybirds - Aishpreet

Year 1 - James

Year 2 - Ollie

Year 3 - Archie A

Year 4 - Martynas

Year 5 - Eliah

Year 6 - Lexi



## BIRTHDAY

## CELEBRATIONS

Happy birthday to all children celebrating their birthday this week! 🎂



Keegan  
Pearl  
James B

## SCHOOL LOTTERY

Congratulations to Mr M Shephard who won £3.90 last week and has very kindly donated this back to school.

Thank you.

We have raised £3091.60 so far.

We have a new area we are fundraising for now and this is the area to the side of the trim trail. This will be an area dedicated to reflection, one that reaches our senses and provides an area of calmness and sanctuary.



# WILLIAM MACGREGOR'S NEWSLETTER

## Key Dates

### October:

21st: LB, Y1&2 Animal man morning  
21st: School Disco  
23rd-25th: Y4 to Whitemore Lakes  
25th: Last day of term

### November:

4th: All ch. back to school  
4th: Y5 to Warwick Castle  
7th: Parents Evening (2-7pm)  
12th: Open morning for Sep 2025 intake (9.15am)  
12th: Friends PTA AGM 6pm in school  
14th: Y2 to Mad Museum/Butterfly farm  
18th-22nd: Book Fair in school  
21st: Y3 to Tanglewood  
21st: Open morning for Sep 2025 intake (9.15am)  
25th: Y6 at Justice museum  
27th: Whole school flu immunisation  
29th: INSET day school closed

### December:

2nd: Ruldolph Run  
3rd: Rudolph Run  
10th: Y1&Y2 nativity at St. Edithas Church 6pm  
13th: Ladybirds nativity at Elim Church 9am  
16th: Y4 to Derby Faith Trail  
16th: Y3 XMAS craft 9-10am  
16th: Y1 XMAS craft 2-3pm  
17th: Y2 XMAS craft 9-10am  
17th: Y4 XMAS craft 2-3pm  
18th: Y5 Xmas craft 9-10am  
18th: Whole school Christmas lunch  
19th: LB XMAS craft 9-10am  
19th: Y6 XMAS craft 2-3pm  
20th: Whole school carol concert (all welcome) 1.50pm  
20th: Last day of term

### January:

6th: INSET DAY school closed  
7th: All ch. back to school  
17th: Young Voices concert

### February:

14th: Last day of term  
24th: All ch. back to school

### March:

10th-14th: Y6 in Paris

### April:

7th: Y3&Y4 Easter production 6pm St. George's Church  
8th: Parents Evening (2-7pm)  
11th: Easter bonnet and egg parade/Last day of term  
28th: INSET day school closed  
29th-30th: Y5 to London

### May:

1st: School potentially closed for polling  
2nd: INSET day school closed  
5th: Bank holiday school closed  
12th-16th: Y6 SATS week  
23rd: Last day of term

### June:

2nd: All ch. back to school  
9th-13th: Y1 phonic screener  
25th: ATLP student awards

## TT ROCKSTARS

Congratulations to all of the children who have improved their rock speed this week!

Rock Hero (under 1 sec) -

Rock Legend (under 2 secs)-

Burak K, Gracie J, Maya L

Rock Star (under 3 secs)-

Lexi H, Summer-Mai P, Ellison W

Headliner (under 4 secs) -

Support Act (under 5 secs)-

Breakthrough Artist (under 6 secs)-

## HOUSE POINTS

Congratulations to all our badge winner this week!

**Bronze – Luca, Salome, Ralph, Anika, Miles (Yr1)**

**Esmae, Izzy, Elsie, Mason, Daisy, Georgia, Maya, Joshua, Martha (Yr3) Ava, Kyrah, Layton, Livy, Louis, Sylvia, Burak, Gracie, Lexi, Ella Ro, Stefi, Zack, Ella Ra, Isabella, Noah, Brody, Maya, Chase, Leart (Yr6)**

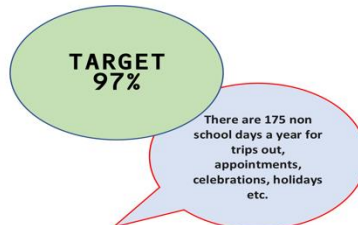
**Silver – James (Yr1) Mia (Yr3)**



# WILLIAM MACGREGOR'S NEWSLETTER

## ATTENDANCE

Whole School: 94.2%  
 Ladybirds: 95.2%  
 Year 1: 96.7%  
 Year 2: 95%  
 Year 3: 94.7%  
 Year 4: 94.5%  
 Year 5: 94.7%  
 Year 6: 88.6%



If your child misses....	That equals....	Which is.....	and over 13 years of schooling that's...
1 day per fortnight	20 Days per year	4 weeks per year	Nearly <u>1.5 years</u>
1 day per week	40 Days	8 weeks	Over <u>2.5 years</u>
2 days per week	80 Days	16 weeks per year	Over <u>5 years</u>
3 days per week	120 Days per year	24 weeks per year	Nearly <u>8 years</u>

**WE DO NOT AUTHORISE HOLIDAYS IN TERM TIME**

### Why is high attendance important for your child's education?

As a parent/carer you want the best life chances for your child/children. Being in school every day gives them the very best chance of achieving this. GCSE'S may seem a long way off for your child but 90% of children with average attendance at primary school and into secondary school of around 85% fail to achieve 5 or more GCSEs and one third of children fail to gain any.

Poor attendance in school will limit children's ability to achieve their full potential and this will impact opportunities in life.

IT IS GOOD TO BE GREEN!  
 COME ON WMG, WE NEED TO IMPROVE ATTENDANCE!  
 WE ARE AIMING FOR 97%

THE CLASS NEXT WEEK WITH THE BEST ATTENDANCE GETS AN EXTRA PLAYTIME

**Y1 have the best attendance this week!**